

MAXi Cold & Hot Water Meter 50mm - 500mm

Woltmann Helix Bulk Water Meter suitable for water distribution and commercial use

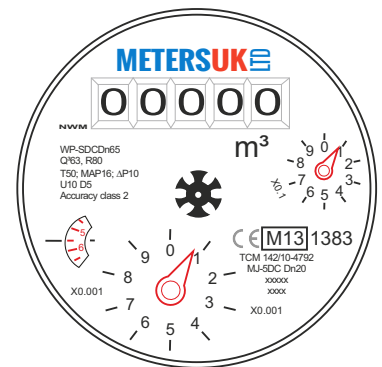
KEY FEATURES

- Woltmann Helix
- Measuring instruments Directive 2004/22/EC
- MID approved - specifications according to ISO4064
- Tested to 17025EN Specifications
- WRAS approved
- Class B - suitable for both billing and monitoring applications
- Long term clear reading - frost resistant
- Cold water meters max. temperature 40°C
- Hot water meters max. temperature 90°C
- Water pressure 16 Bar max
- **pH Scales** - Suitable for liquids in the 5 to 8 range of the pH scale
- Anti-magnetic security pulsed output
- Cast Iron epoxy coated interior
- Replaceable vacuum sealed dry dial module with snug fit plastic cap
- Sealing points on body and couplings
- Suitable for mounting horizontally or vertically subject to suitable installation instructions
- Straight pipe ratio x5 (both sides of the meter)
- PN16 Flanges
- M-Bus or Modbus pulse converter connections



ELECTRICAL CHARACTERISTICS

- Cross section 24//0.22 AWG/mm2
- Insulation resistance 20 (min) Mohm k
- Pulsed output from MAXi is volt free - 2 wires
- **BLACK** = Pulse 1 (-) to the - pulse input terminal of your equipment
- **RED** = Pulse 2 (+) to the + pulse input terminal of your equipment



WRAS approval No. 1801038

PULSE VALUE MAXi METERS

SIZE	STANDARD	ALTERNATE
50mm	1 Pulse per 100 Litre	1 Pulse per 10 Litre
65mm	1 Pulse per 100 Litre	1 Pulse per 10 Litre
80mm	1 Pulse per 100 Litre	1 Pulse per 10 Litre
100mm	1 Pulse per 100 Litre	1 Pulse per 10 Litre
125mm	1 Pulse per 100 Litre	1 Pulse per 10 Litre
150mm	1 Pulse per 100 Litres	1 Pulse per 10 Litres
200mm	1 Pulse per 1000 Litres	1 Pulse per 100 Litres

PULSED OUTPUT DATA

- Historically highly reliable
- Located on the top of the meter for ease of installation
- Anti-magnetic volt free contact (Reed Switch)
- Temperature Range - flexing + 5°C to + 50°C
- Temperature Range - Static - 20°C to + 70°C
- Bending radius 10 x cable diameter

TECHNICAL SPECIFICATIONS

MAXi Cold	301015	301016	301017	301018	301019	301020	301021	301033	301034	301035	301036
MAXi Hot	301022	301023	301024	301025	301026	301027	301028	301029	301030	301031	301032
Size	50mm	65mm	80mm	100mm	125mm	150mm	200mm	250mm	300mm	400mm	500mm
Size BSP	2"	2.5"	3"	4"	5"	6"	6"	10"	12"	16"	20"
¹ Q Min (m ³ /h)	0.45	0.75	1.2	1.8	3	4.5	7.5	12	18	30	45
³ Q Nom (m ³ /h)	15	25	40	60	100	150	250	400	600	1000	1500
³ Q Nom (l/s)	4.17	6.95	11.12	16.68	27.8	41.7	69.5	111.11	166.67	277.78	416.67
⁴ Q Max (m ³ /h)	30	50	80	120	200	300	500	800	1200	2000	3000
Length mm	200	200	225	250	250	300	350	450	500	600	800
Width mm	192	195	200	220	250	285	340	395	445	565	670
Height mm	265	242	275.8	286	275	345.3	372.5	492.8	515.3	630.8	735.5
Connecting Flange (mm)	D	165	185	200	220	250	285	340	395	445	565
	D1	125	145	160	180	210	240	295	350	400	515
	Bolt	4*M16	4*M16	8*M16	8*M16	8*M16	8*M20	8*M20	12*M20	12*M20	16*M20
Weight KG	12	13	16	18	20	42	64	94	114	199	340

