

HE203DF METER CARD * PREPAYMENT

WATER & GAS



PLEASE **READ THE INSTRUCTIONS**



WATER Settings : Pulse Value

Pipe Size : 15mm / 20mm / 25mm = 1 Pulse per litre
: 30mm / 40mm = 1 Pulse per 10 litres

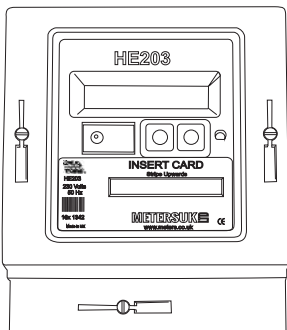
GAS Settings : Pulse Value

The meter give 10 pulses per metre of cubed gas. This equates to 11 kWh.
kWh cost is shown on your gas invoice.

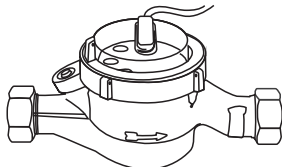


METERS UK LIMITED CANNOT ACCEPT ANY LIABILITY FOR ANY SETTINGS OR CHARGES MADE

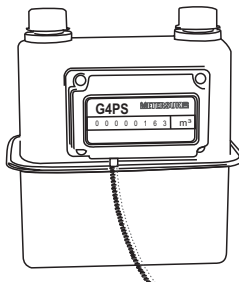
WATER & GAS COMPONENTS :



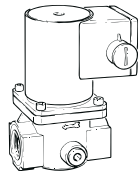
1. The Card Reader



2. The Water Meter

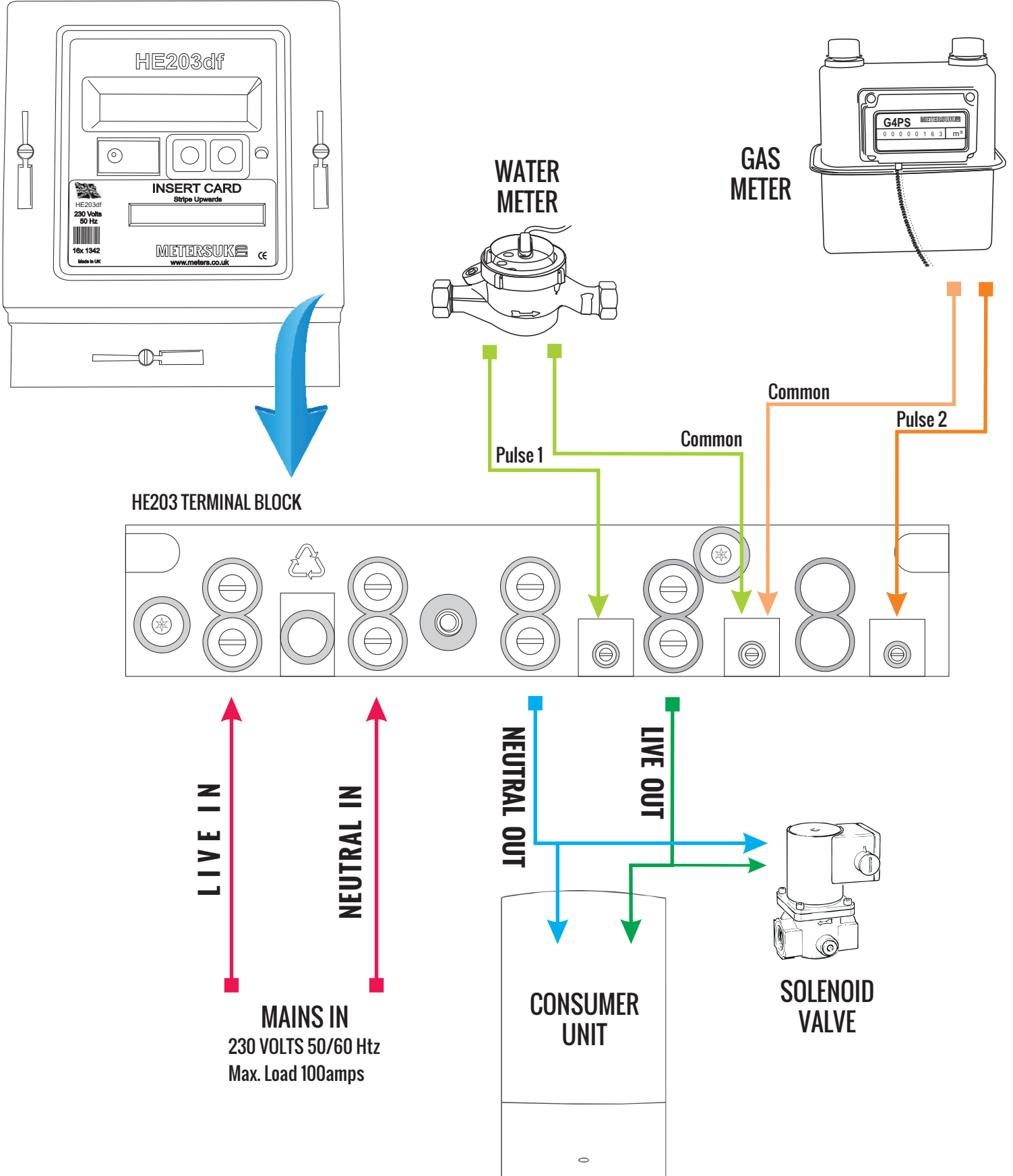


3. The Gas Meter



4. The Solenoid Valve

WIRING SCHEMATIC PREPAYMENT METER SYSTEM - GAS & WATER



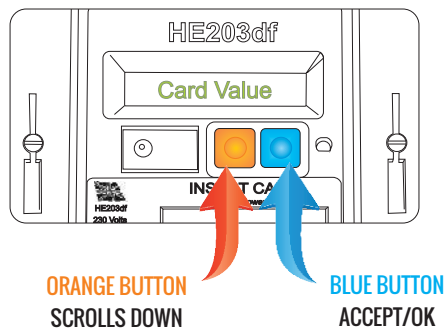
INSTRUCTIONS

PROGRAMMING

The product is designed to offer the operator and customer maximum functionality benefits to ensure optimum operation. Please adhere to the programming instructions methodically.

DEFAULT DISPLAY MODE

When a live electrical connection is made, but the unit is not programmed, the display will always show the default mode of **CARD VALUE**



SCREEN 1 - CARD VALUE

The card has two sides. This screen is where the value of each side is programmed. The value is in pennies (£) or cents (Euro).

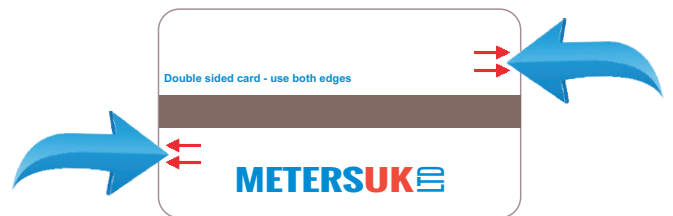
ie. A £ 10 card has £5.00 each side.
Therefore 500 would be programmed in $500 + 500 = 1000$ (£ 10)

A £ 5 card would be programmed with £ 2.50 each side of the card.

Press the **ORANGE**  **BUTTON** to set the unit values

Press the **BLUE**  **BUTTON** to move to the next digit

Once set will automatically move onto the next screen.

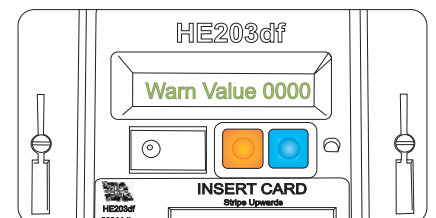


SCREEN 2 - WARNING BUZZER

The warning buzzer is used to alert the user that the time is coming to an end and the facility will be switched off.

If this feature is **not** required program 0000. Use the **BLUE**  **BUTTON** to skip the digits.

Once the selection has been accepted the next screen will come up automatically



SCREEN 3 - PROGRAMMING UTILITY ONE

The programming of the utilities is determined by the connections of PULSE 1 - COMMON - PULSE 2

In this example as per figure 1 on page 2, the following connections have been made.
ELECTRIC - Pulse 1 & Common
GAS - Pulse 2 & Common

therefore, program **Utility One - Water**

Utility Two - Gas

Instructions

SCREEN 3 - PULSE MULTIPLIER - Channel 1

This is the pulse value of the Utility Meter wired into Channel no. 1 ie. Pulse 1 & common.
As per the diagram on page 2, the following would be wired.

Pulse 1 and Common = The Water Meter

Water Settings : Pulse Value. Please determine from below which is the right setting, according to the pipe size.

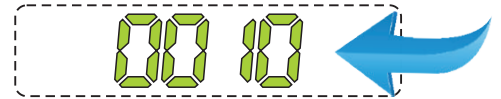
- Pipe Size : 15mm / 20mm / 25mm = 1 Pulse per **1** litre
- : 30mm / 40mm = 1 Pulse per **10** litres
- : 50mm = 1 Pulse per **100** litres

Press the **ORANGE**  **BUTTON** to set the unit values

Press the **BLUE**  **BUTTON** to move to the next digit

Once set will automatically move onto the next screen.

This is what the screen would look like
10 Litres



SCREEN 4 - UTILITY VALUE

This will be the value per pulse of the water. This is what you physically pay. This should be found on your water bill.
If you are unsure of the amount you pay please contact your utilities provider as Meters UK cannot advise you on what to enter.

The cost of Kwh of Water



This is what the screen would look like if your water was 5p or 5c

SCREEN 5 - PROGRAMMING UTILITY TWO

As per the example on Figure 1 page two.

Pulse 2 and Common = Gas

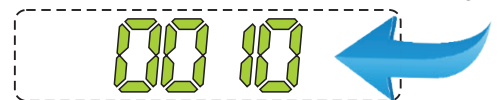
Enter 0010

Press the **ORANGE**  **BUTTON** to set the unit values

Press the **BLUE**  **BUTTON** to move to the next digit

Once set will automatically move onto the next screen.

This is what the screen would look like
10 Pulses



SCREEN 6 - UTILITY VALUE

This will be the value per pulse of the gas. This is what you physically pay. This should be found on your gas bill.
If you are unsure of the amount you pay please contact your utilities provider as Meters UK cannot advise you on what to enter.

The cost of Kwh of gas



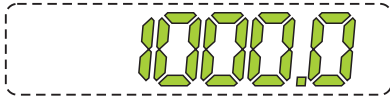
This is what the screen would look like if your gas was 4p or 4c

Instructions

SCREEN 7 - EMERGENCY CREDIT

When the full amount credited to the meter has been used up, the Emergency Credit facility will be available for you to use. The emergency credit amount is not fixed and can be set at any amount. In the event this facility is not required, program 0000

ie. £ 10 = 0000



This is what the screen would look like £ 10.00

Press the **ORANGE**  **BUTTON** to set the unit values

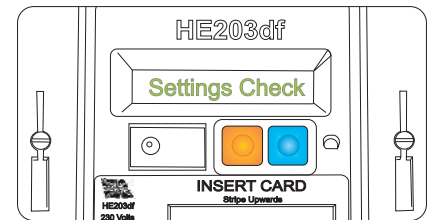
Press the **BLUE**  **BUTTON** to move to the next digit

Once set will automatically move onto the next screen.


SCREEN 8 - SETTINGS CHECK


The system now scrolls through the settings which have been programmed.

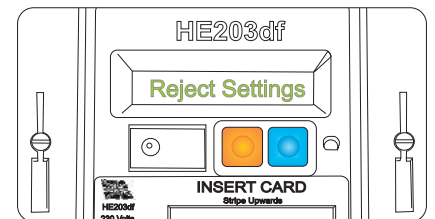
IT IS VERY IMPORTANT TO DOUBLE CHECK THESE SETTINGS, as once set can only be changed with a Zapper Tool.




SCREEN 9 - REJECT SETTINGS

After the settings have been checked the program automatically moves into Reject Settings. If you are unsure that the settings are anything but 101% correct, press the **BLUE BUTTON**  to reject the settings entered and re-insert your settings.

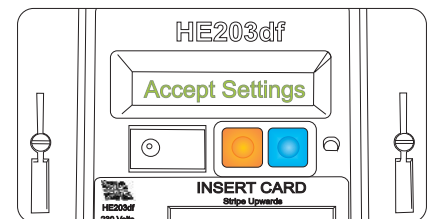
Only if you are happy with the settings would you scroll **ORANGE**  **BUTTON** to the next screen ACCEPT settings.



SCREEN 10 - ACCEPT SETTINGS

If you are 100% happy with the settings entered, then press and hold the **BLUE**  **BUTTON**. Hold for 10 seconds. There will be a continuous beeping sound whilst all the settings are being saved.

Once saved the screen will default back to the CREDIT or INSERT CARD screen.



Instructions

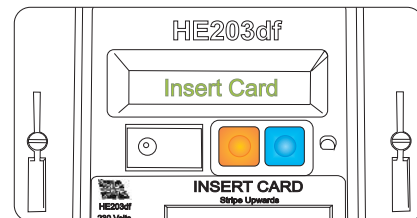
INSTRUCTIONS

TO OPERATE

LOADING CREDIT

INSERT CARD - no credit in the machine

Insert the card stripe upwards. Insert firmly into the machine and remove quickly. Upon removal the side of the card will be crimped with three small indentations. Do the same on the other end of the card, stripe upwards.



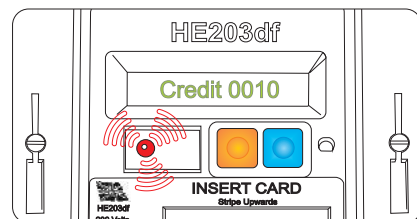
Credit Example :




Total £ 10 credit on the card

CREDIT AVAILABLE

The meter is now operational and the credit amount is displayed
The red LED flashes indicating credits being decremented.



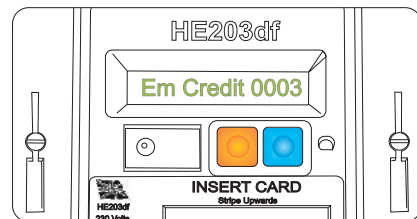
EMERGENCY CREDIT

At ZERO credit, press and hold both buttons  for 10 seconds.

This will then activate the emergency credit facility.


Once the emergency credit has been used up, the meter will switch the power/facility off.

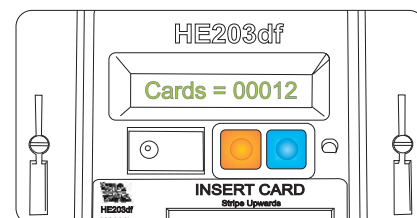
Any emergency credit used will be taken off the credit amount when new credit is loaded.



ie. Emergency Credit used £ 3.00
Credit Top Up £ 10.00 = Total Available Credit £ 7.00

AUDIT FACILITY

Press the **ORANGE BUTTON**  and the display screen will show how many cards have been inserted into the MACHINE.



Instructions

TO RESET THE METER

In the event of a power cut or if the circuit trips the meter will need to be reset.
Before resetting the meter please ensure that all stoves or other gas utilities are switched off.

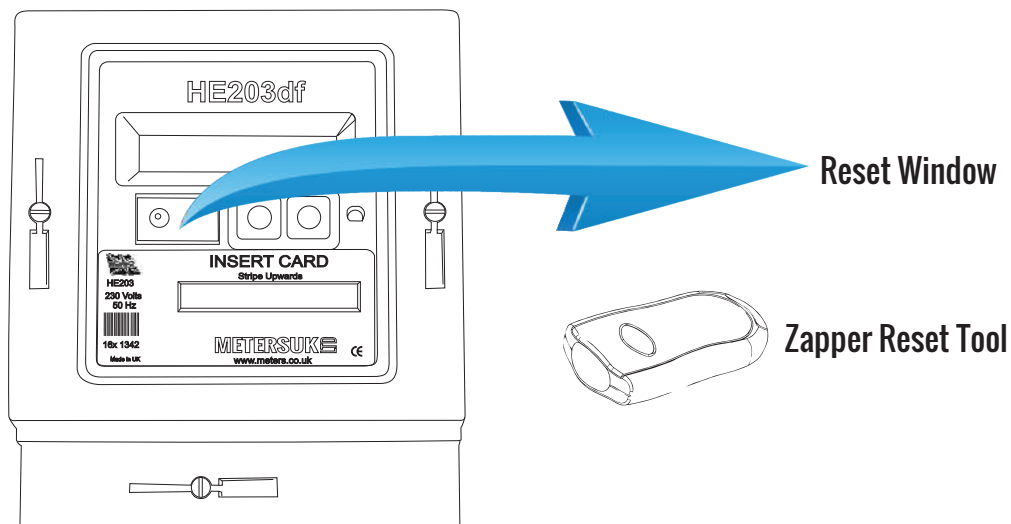
Press and hold the ORANGE  or BLUE  button on the meter to restart/reset the meter.

To confirm that the meter has been reset the display will show '**CREDIT 000££**' and the meter will function as normal.

CHANGE SETTINGS

Settings can only be changed with the **ZAPPER RESET TOOL**.

The tool can only be purchased from Meters UK Ltd. Zapper reset tools will only be sold to landlords or owners.



Once the Zapper Tool has been purchased point the front of the zapper directly at the reset window next to the red button on the meter.

Press and hold the button on the Zapper, once the remote connects to the meter the display will show 'OVERRIDE', you can now start to reset the meter to your desired settings.

For more information on the instructions please request a Zapper Tool instruction guide.

METER CARD ERROR

If the meter does not accept your card it may mean that the card reader heads need cleaning. Use METHYLATED SPIRITS on the reverse side of the card and insert twice with the blank side facing upwards. You can obtain the spirit from various outlets.

Please do not use any other spirit.