

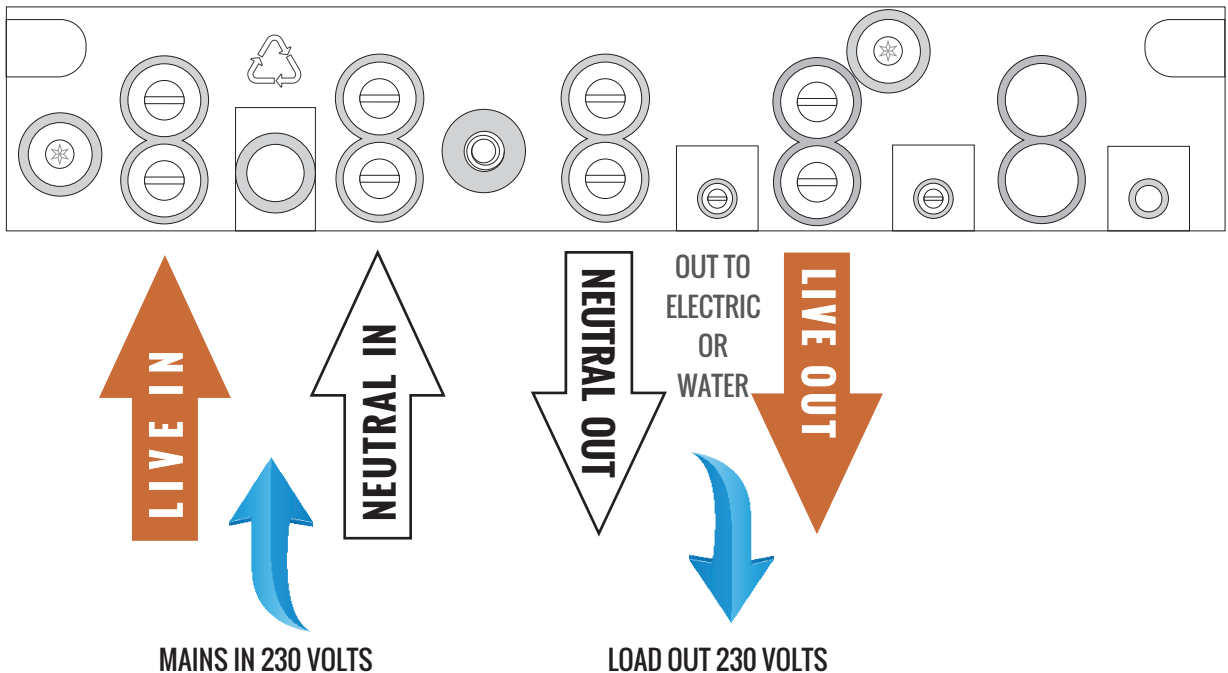
HE202 METER

CARD OPERATED PREPAYMENT TIMER



**FOR WIRING & PROGRAMMING
PLEASE READ THE FOLLOWING INSTRUCTIONS**

HE202 TERMINAL BLOCK



PROGRAMMING THE UNIT

Once the unit is on, the unit will display 'SESSION IN MINS' before it has been programmed.

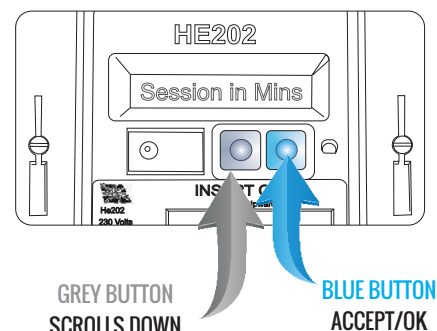
To program or alter settings, use the TWO buttons on the front panel.

SCREEN 1 - DO YOU WANT MINUTES/HOURS OR DAYS

The period of time can be set by Minutes, hours or days. Default time will always show in minutes.

Press the GREY button the SCROLL down
Press the BLUE button to ACCEPT

Once the selection has been accepted the next screen will come up automatically.



SCREEN 2 - TIME REQUIRED

The period of time can be set from 1 to 99

When setting the time, please remember that the card is bi-encoded and each of the two sides will be credited with the time required. ie. 10 minutes will equal the card being credited with 20 min (2 x 10min).

Once the selection has been accepted the next screen will come up automatically



SCREEN 3 - WARNING BUZZER

The warning buzzer is used to alert the user that the time is coming to an end and the facility will be switched off.

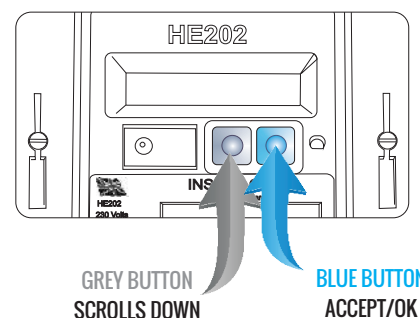
If this feature is **not** required **program 00**.

Once the selection has been accepted the next screen will come up automatically

SCREEN 4 - CHECK SETTINGS

VERY IMPORTANT !!!!!!!!!!!!!

Double check all the settings you have selected and make sure that they are correct.



SCREEN 5 - SAVE

The programme will automatically scroll into 'REJECT SETTINGS' Mode. By rejecting the settings, it allows you to change the settings made. If the settings are correct, press the BLUE button and scroll to ACCEPT SETTINGS.

PLEASE NOTE!

By accepting the settings, the software will be **LOCKED** and **CANNOT** be changed except with a Zapper Tool

Press and hold the BLUE button for 10 seconds. A continuous audible alarm will sound confirming that the **PROGRAMMING IS NOW COMPLETE**.

USING THE METER

The HE202 will display '**SESSION IN MINS**' this is the default display meaning that there is no credit on the machine. Insert the card, with the reading strip upwards.

Once the card is in the machine the display will show '**THANK YOU**' to indicate that it has been read and the amount deducted. To confirm this, the card will be crimped with three small indentations to show that the side has been used.

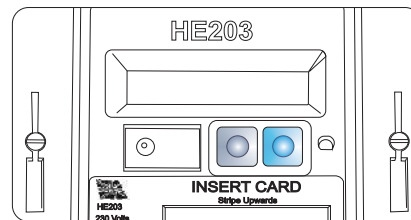
Both sides must be inserted so that the full amount is read by the meter. Please ensure that the card is inserted quickly and then kept in the meter until the card is stamped.

The time will now start to be used on the meter, which will be indicated by the red LED flashing



AUDIT FACILITY

Press the grey button and the display screen will show how many cards have been inserted into the machine.



TO RESET THE METER

In the event of a power cut or if the circuit trips the meter will need to be reset. Before resetting the meter please ensure that all stoves or other gas utilities are switched off.

Press and hold the BLUE or GREY button on the meter to restart/reset the meter. To confirm that the meter has been reset the display will show '**SESSION IN MINS**' and the meter will function as normal.

CHANGE SETTINGS

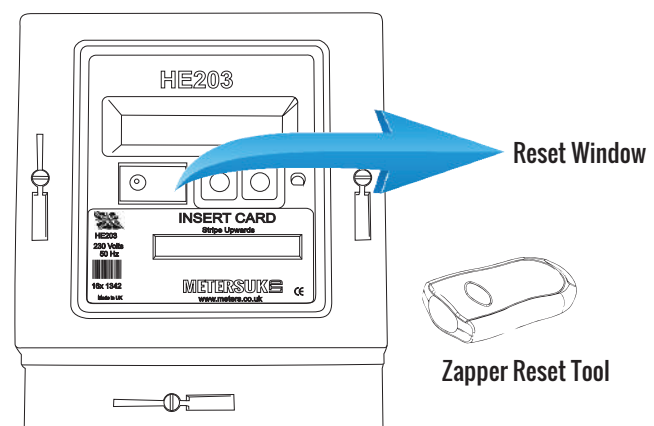
Settings can only be changed with the **ZAPPER RESET TOOL**.

The tool can only be purchased from Meters UK Ltd. Zapper reset tools will only be sold to landlords or owners.

Once the Zapper Tool has been purchased point the front of the zapper directly at the reset window next to the red button on the meter.

Press and hold the button on the Zapper, once the remote connects to the meter the display will show '**OVERRIDE**', you can now start to reset the meter to your desired settings.

For more information on the instructions please request a Zapper Tool instruction guide.



METER CARD ERROR

If the meter does not accept your card it may mean that the card reader heads need cleaning. Use METHYLATED SPIRITS on the reverse side of the card and insert twice with the blank side facing upwards. You can obtain the spirit from various outlets.

Please do not use any other spirit.