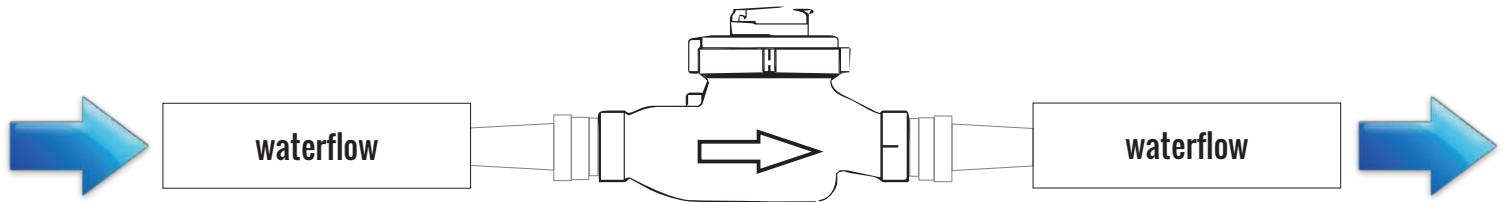


TOMi Water Meters

INSTALLATION INSTRUCTIONS



INSTALLATION

- Maximum operating temperature 40°C cold - 90°C hot
- Straight pipe requirement x 5 each side of the flow meter
- Ensure that pipes are free from any debris
- Ensure that waterflow and arrow on meter are in the same direction
- Suitable for horizontal or vertical installation (waterflow in vertical installation must be downwards, or a fully filled system.
- If flow is upwards then a non-return valve must be put in place
- Flow meters should not be installed at an angle or upside down
- Meters must be covered by insulation appropriate to their location
- Where manual reading are required, it is recommended that thermal jackets are used
- It is recommended that a Y-strainer is inserted upstream with 2 gate valves on either side.

GUARANTEE

The company guarantees the product for a minimum of one year. The guarantee is strictly on a return to base basis and subject to the Company Terms and Conditions of sale. www.meters.co.uk/termsandconditions.htm

PULSED OUTPUT

- Volt Free (maximum voltage to be introduced 12vdc)
- Black = pulse 1 (-) to the - pulse input terminals of your equipment
- Red = pulse 2 (+) to the + input terminal of your equipment

PULSE VALUE TOMi METERS

SIZE		PULSE VALUE
15mm	½"	1 Pulse per 1 Litre
20mm	¾"	1 Pulse per 1 Litre
25mm	1"	1 Pulse per 1 Litre
30mm	1 ¼"	1 Pulse per 10 Litres
40mm	1 ½"	1 Pulse per 10 Litres
50mm	2"	1 Pulse per 100 Litres

EXTENSION PULSE CABLES



THERMAL JACKETS

