

REMOTE COUNTER UNIT

Provides remote reading facilities for utility meters such as electricity, gas, heat and water.

KEY FEATURES

- 1 way version and 6 way version
- The Utility Meter sends a pulse to the RCU
- Powered by 230 or 240 Volts
- Retro fits existing meters
- Can configure readings in standard format (kWh or m³/h)



TECHNICAL DATA

Case	Heavy duty nylon, with Perspex front viewing panel 124mm wide x 170 mm high x 95mm deep. Weight 0.9kg
Power Options	230 volts or 24 volts
Versions	1 way (1 meter) or 6 way (6 meters)
Input Pulse	Minimum 7mSec (low mode volt free) output Contact current 1mA—voltage 24vdc
Length of Cable	Maximum length of cable 200 metres in perfect condition* (* being not near to other power cables). Recommended cabling type-twisted pair-unshielded such as high conductivity speaker cable.

IT IS STRONGLY RECOMMENDED THAT THE CABLE DOESN'T RUN NEXT TO POWER CABLES.

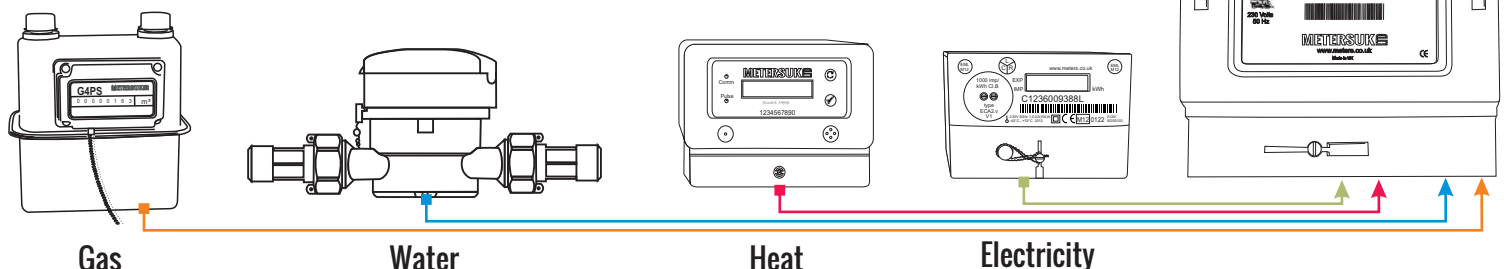
Cabling test with the above cable over 100 metres—voltage drop 0.1 volts (27.8 volts out—27.7 volts in).

LCD Display	16 character display includes spaces. Visual diameter 65mm wide x 13mm high. Hitachi /display Driver 5 x 7 dots per character. Character size 8.5mm high x 4.5mm wide. Characters available = 92 includes low and upper case.
--------------------	---

Password Programming	Via Zapper. Allows the operators back into the programming software list. www.meters.co.uk/zapper
Display Options	Via two buttons on front of case. Grey Button = scroll, Blue Button = accept.
Data Retention/Memory	Programmable as kWh - m ³ /h - blank. Maximum characters 7
Temperature Range	In the event of a powercut, programmed data will be retained in memory Operating range -10c to 85c. Limit range of operation -20c to 90c. Storage range -25c to 90c. This complies with IEC 1036 4.3.1

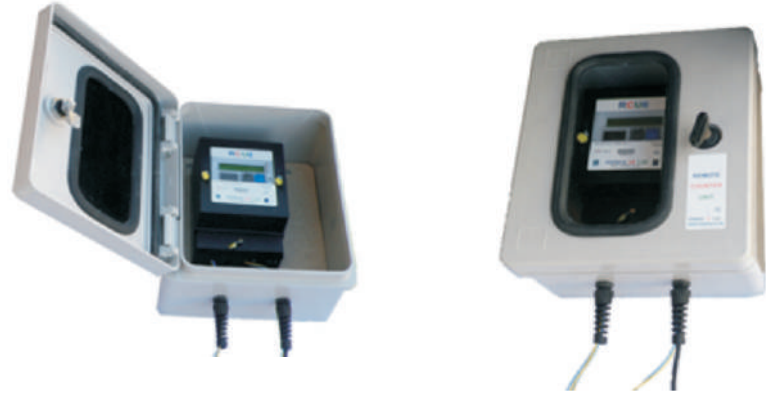
REMOTE COUNTER UNIT

Can read up to six meters



REMOTE COUNTER ENCLOSURE

Heavy Duty Cabinet
 High Impact Resistant
 PMMA Plexiglass to BSEN100
 Lockable
 Manufactured to IP67 Rating
 External Size HxWxD : 300 x 250 x 170
 Internal Size HxWxD : 270 x 240 x 130
 Order Code: VW302517



EMC Standards and Compliances

Full compliance meeting generic standard EN50091-2 and immunity standard EN 50082-2 for Industrial environments.
 RoHS and WEEE Safety Standard Complies with EN61010 installation category 11. Pollution degree 2

FREQUENTLY ASKED QUESTIONS

Q : How does the RCU work?

A : Collects pulses from utility meters and displays them as a utility meter reading. E.g. kWh's, m³/h or blank.

Q : What power source is required?

A : 230 or 24 volt

Q: How do I programme in the values?

A: A user friendly, programming method, two buttons on the front panel.
 The first button scrolls and the second button accepts.

Q: How are the displays reset?

A : A zapper (handheld reader) - that allows the settings to be changed and zeroed.

Q : Are they expensive?

A : No, they have low ownership cost.

Q : How many utility meters can be wired into the RCU?

A : Up to six meters into the RCU6 version. One meter in the RCU1 version

Q : Do they have to be all of the same type of meters?

A : No they can be mixed at the programming stage

Q : How do I know the product is of a good quality?

A : The product is manufactured to ISOEN and the company has an accredited ISO9001 quality system

Q : Can they be used inside panels?

A : Yes, no problem

Q What is the maximum distance in which they can be used?

AThe recommended maximum distance is 200 metres unshielded cable, twisted pair, in perfect conditions.
 Not to be run next to power cables.

Q : Is there a wireless version?

A : No, they are hardwired for reliability.

