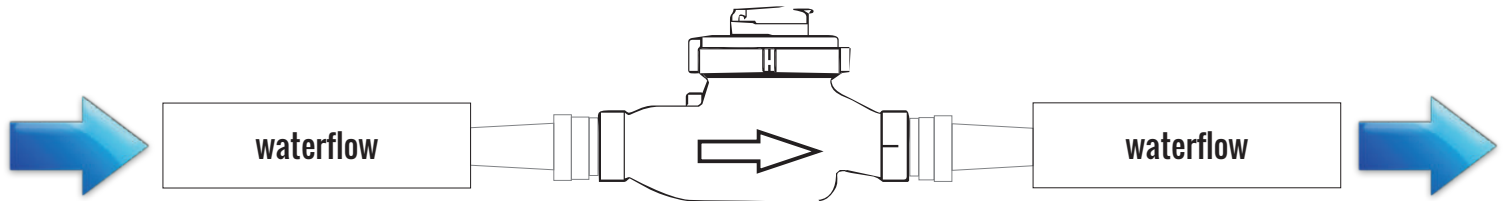


# MAXi Flow Meters

## INSTALLATION INSTRUCTIONS



## INSTALLATION

- Maximum operating temperature 40°C cold - 90°C hot
- Maximum pressure 16 Bar
- Straight pipe requirement x 5 each side of the flow meter
- Ensure that pipes are free from any debris
- Ensure that waterflow and arrow on meter are in the same direction
- Suitable for horizontal or vertical installation (waterflow in vertical installation must be downwards, or a fully filled system).
- Flow meters should **not** be installed at an angle or upside down
- Meters must be covered by insulation appropriate to their location
- Where manual reading are required, it is recommended that thermal jackets are used

## GUARANTEE

The company guarantees the product for a minimum of one year. The guarantee is strictly on a return to base basis and subject to the Company Terms and Conditions of sale. [www.meters.co.uk/termsandconditions.htm](http://www.meters.co.uk/termsandconditions.htm)

## PULSED OUTPUT

- Volt Free (maximum voltage to be introduced 12vdc)
- Black = pulse 1 (-) to the - pulse input terminals of your equipment
- Red = pulse 2 (+) to the + input terminal of your equipment

## PULSE VALUE MAXi METERS

SIZE		PULSE VALUE
50 mm	2.0 "	1 Pulse per 100 Litre
65 mm	2 ½ "	1 Pulse per 100 Litre
80 mm	3.0 "	1 Pulse per 100 Litre
100 mm	4.0 "	1 Pulse per 100 Litre
125 mm	5.0 "	1 Pulse per 100 Litre
150 mm	6.0 "	1 Pulse per 1000 Litres
200 mm	8.0 "	1 Pulse per 1000 Litres

EXTENSION PULSE CABLES



THERMAL JACKETS

