

HE203e METER

PREPAYMENT CARD METER

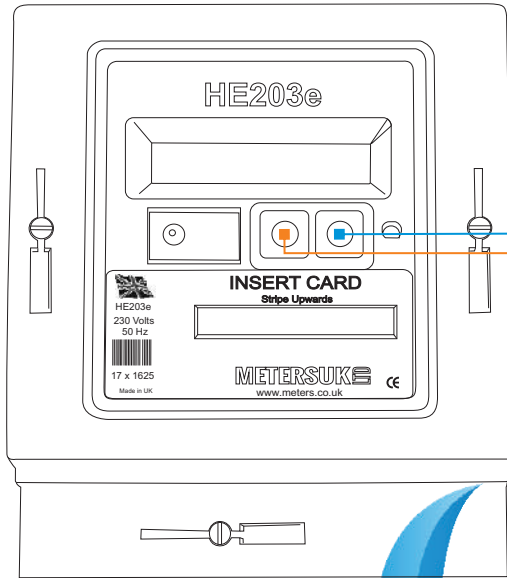


PLEASE READ THE INSTRUCTIONS



METERS UK LIMITED CANNOT ACCEPT ANY LIABILITY FOR ANY SETTINGS OR CHARGES MADE

WIRING SCHEMATIC METER SYSTEM - CARD READING



PROGRAMMING
BUTTONS

General

HE203e : 230 Volts 50/60hz
Maximum Load : 100 Amps

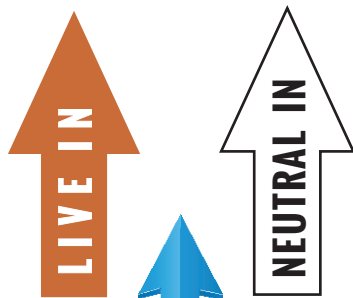
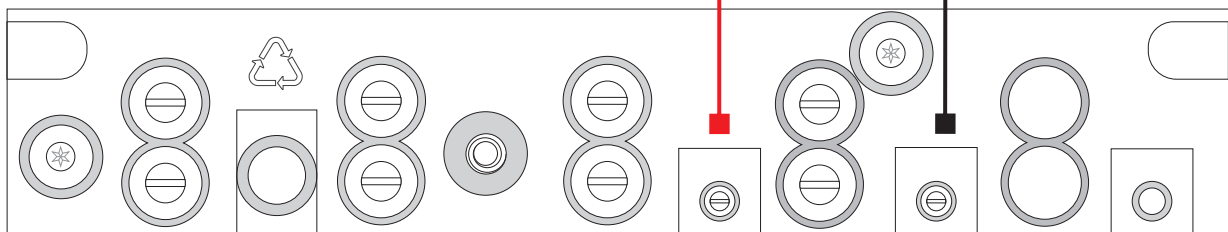
ELECTRIC METER:
Pulse cables connected to the terminal block by the small terminals

Pulse cables: Pulse 1 & Common

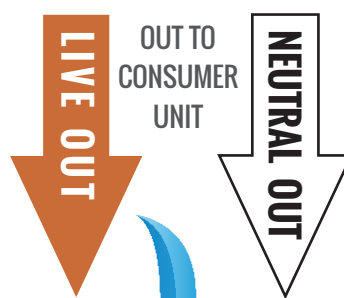
SINGLE fuel use

PULSE WIRES
TO ELECTRIC METER
(Polarity Sensitive)

HE203e TERMINAL BLOCK

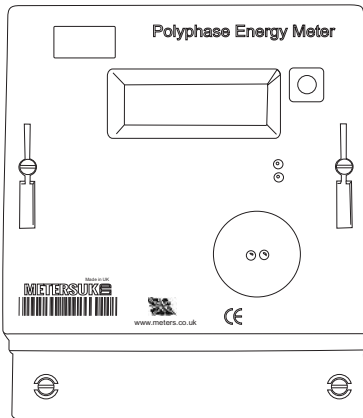


MAINS IN 230 VOLTS



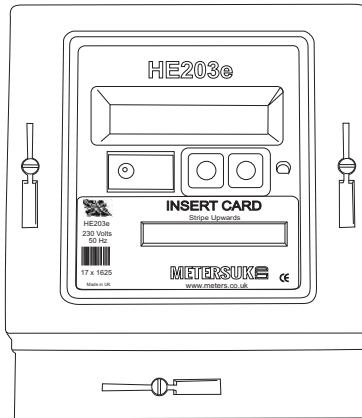
LOAD OUT 230 VOLTS

OUT TO
CONSUMER
UNIT



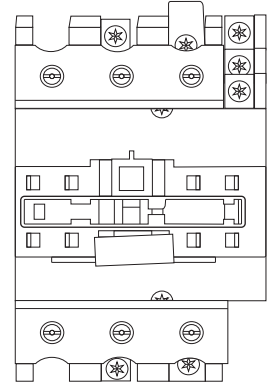
1. Three Phase Electric Meter

Mains feed 230V - 415 Volts



2. The Card Reader

Requires 230V feed
Black pulse cable is polarity sensitive

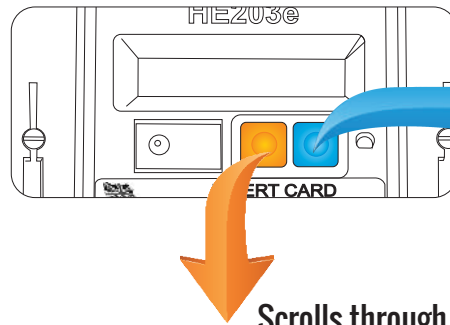


3. Three Phase Contactor

INSTRUCTIONS

PROGRAMMING

The product is designed to offer the operator and customer maximum functionality benefits, to ensure optimum operation, please adhere to the programming methodically.



Accepts the Choice made (OK)

Scrolls through Choices

PROGRAMMING DISPLAYS

FIRST BOOT UP	Meters UK Ltd	1st screen on powering up
	HE203V	Version number
PROGRAMMING VALUES	Card Value	Value of the Card # ¹
	Warning Value	Usually set to 0000
	Pulse Mult	Pulse Value of Utility Meter
	Util Cost	Cost of Fuel/Utility per unit # ²
	Emergency Credit	Emergency Credit Value # ³
SETTINGS CHECK	Confirms all of the above settings made	
REJECT SETTINGS	Once the settings have been confirmed, the system automatically defaults to REJECT Press BLUE button until scrolls to ACCEPT. PRESS AND HOLD BLUE button for 10 seconds	
OPERATIONAL DISPLAYS	Insert Card	Credit Request
	Thank You	Credit Recieved
	Credit	Shown on Screen

Note 1 Card Value is show in single units ie. £ 5 = 500. Therefore £ 20 will be 10000 on each side of the card.

Note 2 Utility Cost is the cost of a unit/kWh of electricity meters uk ltd cannot help you with this. Only the Utility provider can provide this information

Note 3 Emergency Credit. At zero the consumer can access this facility by holding both buttons for 5 seconds. Credit used will be taken off the next card value.

INSERTING CARDS

Insert each side of the card fully - sharply - remove from the card reader

If the card does not activate - Remove from the card reader and give the HE203e approx. 30 seconds to reset and try again. When a credit has been accepted, the card will be crimped on removal from the card reader.

At zero credit the He203 closes an internal contactor (between the live terminals). The contactor is rated at 100Amps, 230v-50Hz

TO RESET THE METER

In the event of a power cut or if the circuit trips the meter will need to be reset.

Before resetting the meter please ensure that all stoves or other gas utilities are switched off.

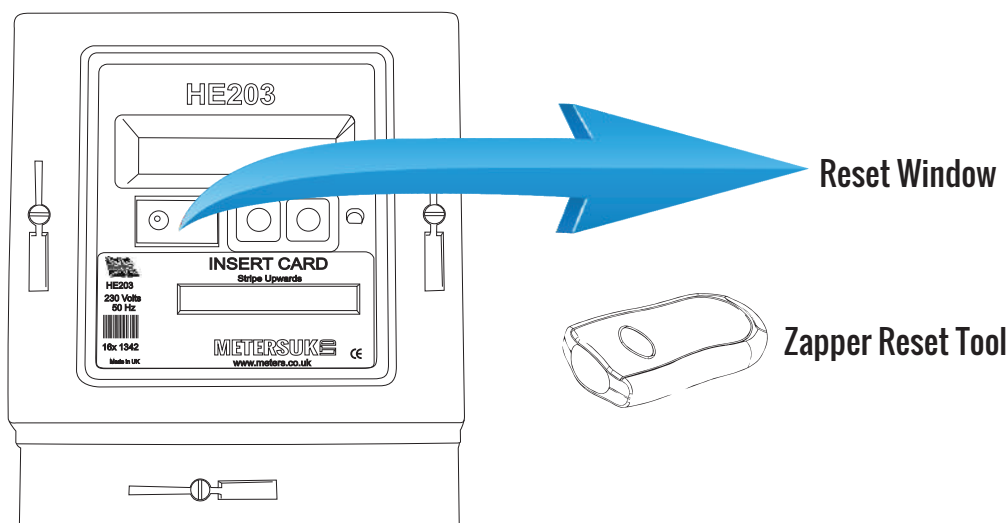
Press and hold the BLUE or GREY button on the meter to restart/reset the meter.

To confirm that the meter has been reset the display will show '**CREDIT 000££**' and the meter will function as normal.

CHANGE SETTINGS

Settings can only be changed with the **ZAPPER RESET TOOL**.

The tool can only be purchased from Meters UK Ltd. Zapper reset tools will only be sold to landlords or owners.



Once the Zapper Tool has been purchased point the front of the zapper directly at the reset window next to the red button on the meter.

Press and hold the button on the Zapper, once the remote connects to the meter the display will show 'OVERRIDE', you can now start to reset the meter to your desired settings.

For more information on the instructions please request a Zapper Tool instruction guide.

METER CARD ERROR

If the meter does not accept your card it may mean that the card reader heads need cleaning. Use METHYLATED SPIRITS on the reverse side of the card and insert twice with the blank side facing upwards. You can obtain the spirit from various outlets.

Please do not use any other spirit.