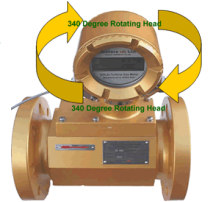


GOLDi Gas Turbine Meters



- Q** What standard are the Gold's manufactured to and are they suitable for billing purposes?
- A** GOLDi's are manufactured to ISOEN 9951 and are suitable for billing or energy management applications.
- Q** What fittings are required?
- A** All GOLDI Turbine Gas Meters are flanged to the standard PN16 flange size
- Q** Is Pressure loss a problem?
- A** GOLDi Turbines have the smallest pressure losses in the industry
- Q** How accurate are they?
- A** Dependant on flow rates and pipe size they can have accuracy up to 1%
- Q** I am installing in pipe work next to a wall which way round is the head?
- A** It doesn't matter as the GOLDi has a 'unique' 340 degree rotating head
- Q** The GOLDI needs to be connected to a Building Management or Automatic Meter Reading system for remote reading—does it have a pulsed output facility?
- A** Yes a pulsed output is fitted as standard and it dispatches 1 pulse per 1m3. Additionally we can offer the following outputs:



www.meters.co.uk/shara100.htm
www.meters.co.uk/EF1.htm

- Q** Is the GOLDi Turbine Gas Meter easy to install?
- A** Yes its small and relatively lightweight—where being installed into existing pipe work we recommend using FLEXi REXi—flexible connectors www.meters.co.uk/flexirexi.htm
- Q** Can the GOLDi be installed in a horizontal or vertical position?
- A** Yes as long as the flow is in the direction of the arrow marked on the meter body.

