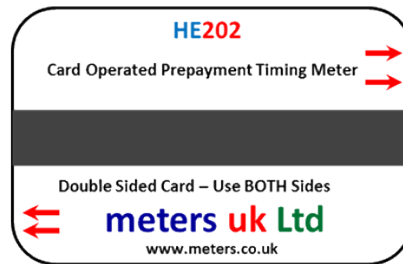


Installation Instructions

HE202

Prepayment Card Timing Meter



Support British Manufacturing

This product has been designed
and is totally manufactured in the UK



He read the Instructions



He **DIDN'T** !!!!



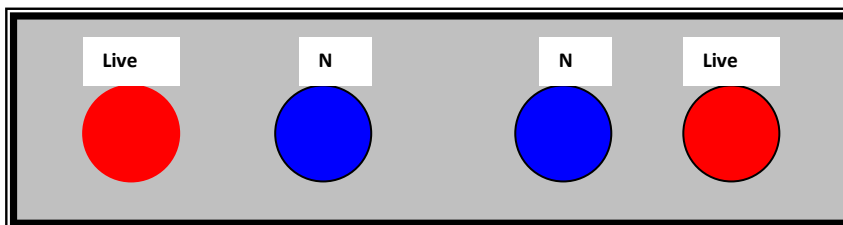
www.meters.co.uk



Installation Instructions

Wiring Diagram

HE202 Terminal Block



Programming HE 202

The product is designed to offer the operator and customer maximum functionality benefits, to ensure optimum operation, please adhere to the programming methodically.

Default Display Mode

When a live electrical connection is made, but the unit is not programmed the display will always show the default mode of :- **Session In Mins**

To program or alter settings use the two buttons on the front panel



Grey (Left) Button Increments Blue (Right) Button Scrolls Program

Screen 1 – Time Period - Minutes /Hours /Days - Default (minutes)

Press Grey to Scroll – Blue to accept
(on acceptance moves to next screen automatically)

Screen 2 – Insert Time Required - 1 to 99

Press Grey to Scroll – Blue to accept
(on acceptance moves to next screen automatically)
(Please note the card is bi encoded and each of the two card sides will credit this value – ie program here 10 mins – card will credit 2x 10mins)



Installation Instructions

Screen 3 – Warning Buzzer – Buzzer warning of impending switch off (if not required program 00)
Press Grey to Scroll – Blue to accept
(on acceptance moves to next screen automatically)

Screen 4 -- IMPORTANT – Settings Check – Automatically Scrolls through settings made.



Screen 5 - Saving Settings - At this point the software will automatically scroll into 'Reject Settings' – by rejecting it offers the opportunity to change the settings made.
If you are happy with the settings – **press the Blue button and scroll into Accept Settings**
IMPORTANT – By accepting the settings the software will be locked and cannot be changed – other than with a Reset Zapper Tool

HOLD DOWN THE BLUE BUTTON FOR 10 Secs – A continuous audible alarm will sound
PROGRAMMING IS NOW COMPLETED

To Operate

Default Display - = Insert Card

HE 202 Cards are bi encoded – each end provides a credit value as per Screen 2 (Time Inserted) .

The card must be inserted stripe upwards

On insertion the display indicates a 'Thank You' message **The HE202 is now operational**

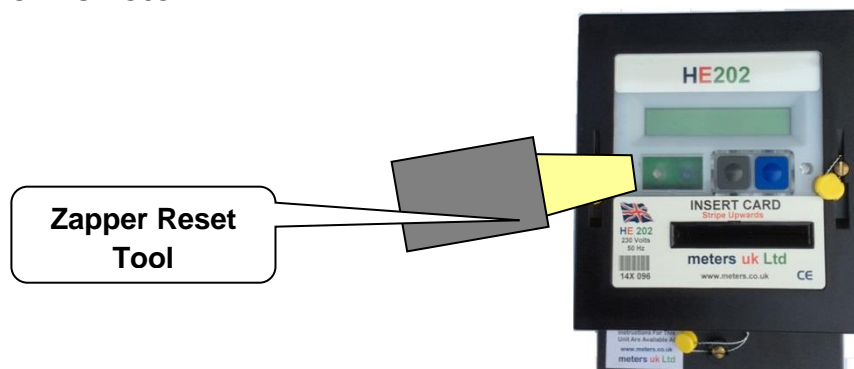
And the amount of time available is displayed. The red led 'flashes' indicating time being decremented

Audit Facility

Press the grey button and the display Indicates the number of card passes that have taken place



Need to alter / change settings – Over ride Facility !!! - After passing 'Screen 5' the software locks in the settings, these can only be altered with a Zapper Reset Tool - Purchased directly from meters uk Ltd
Tel 01524 841909



Installation Instructions



www.meters.co.uk

